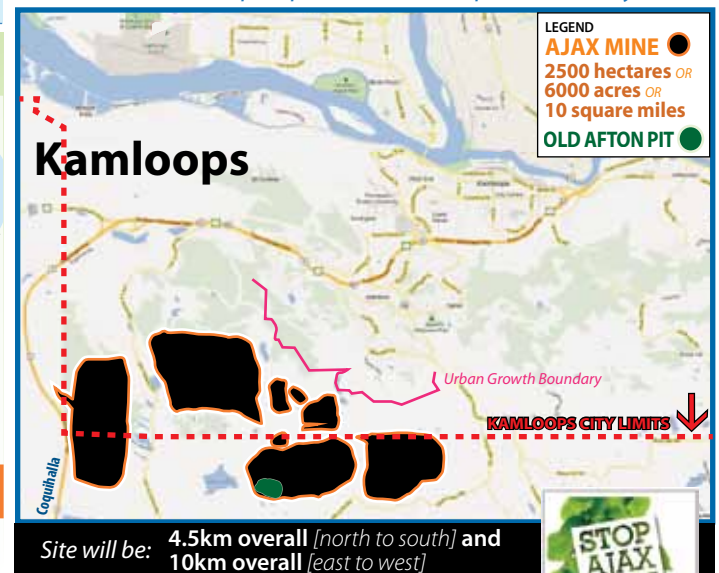
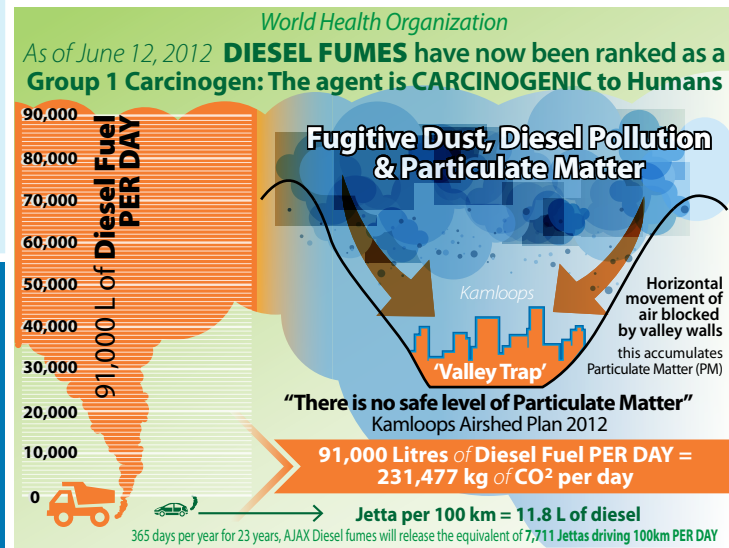
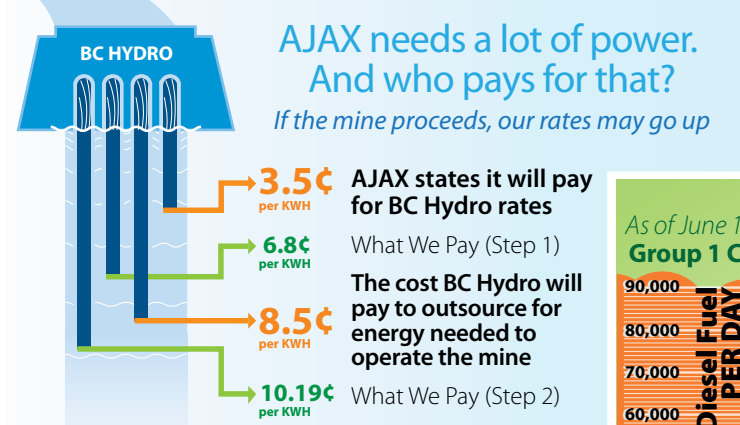
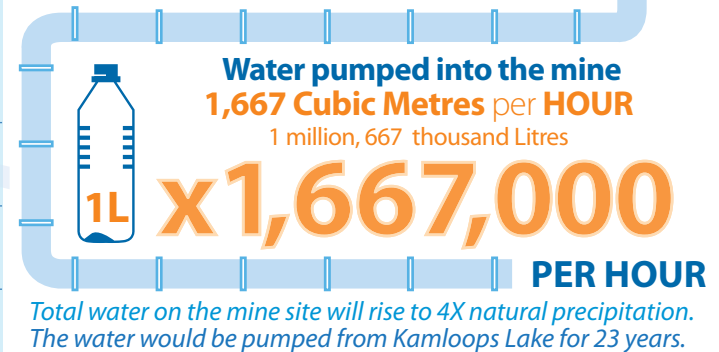
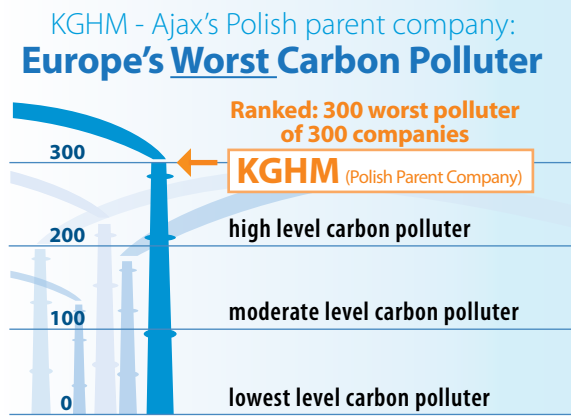
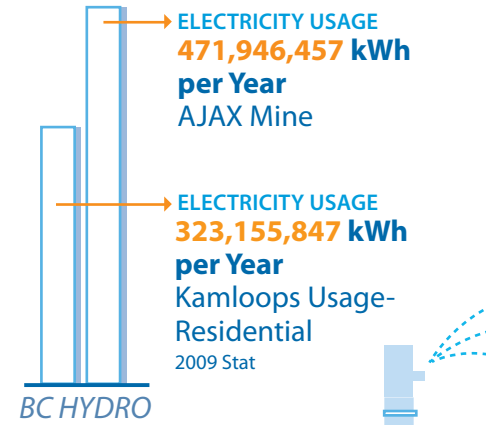
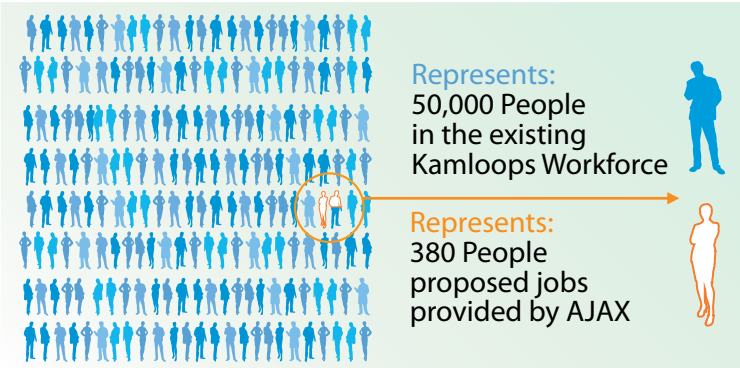
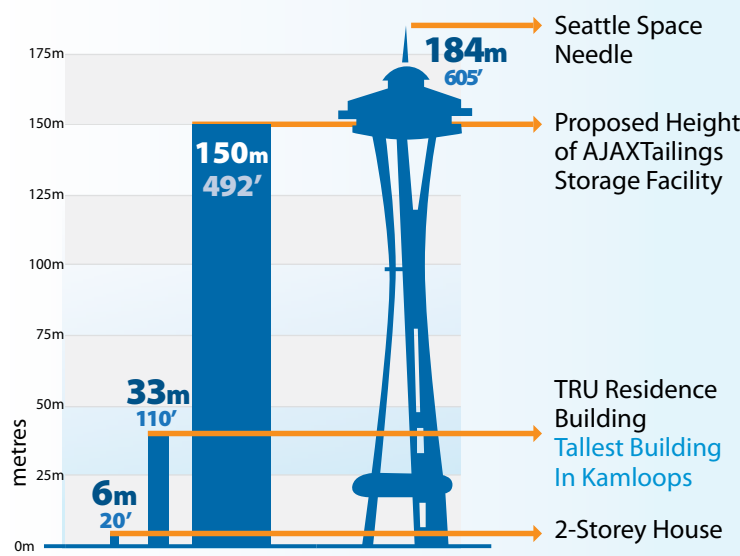


# It's NOT a Done Deal!



## AJAX Mine - A Mine Too Close!



- 1.25 km** The nearest point in AJAX mine site to the nearest housing in Aberdeen & Pacific Way Elementary School
- 1.9 km** Royal Inland Hospital to the Great Canadian Superstore (via Columbia St.)
- 2.1 km** Overlander (Blue) Bridge to the Red Bridge (via Lorne St. and Victoria St.)

Please Volunteer or Please Donate!  
Go to [stopajaxmine.ca](http://stopajaxmine.ca) or call 250.377.8045

Get the facts | Stay informed LIKE US on Facebook Go to [facebook.com/stopajaxmine](http://facebook.com/stopajaxmine)

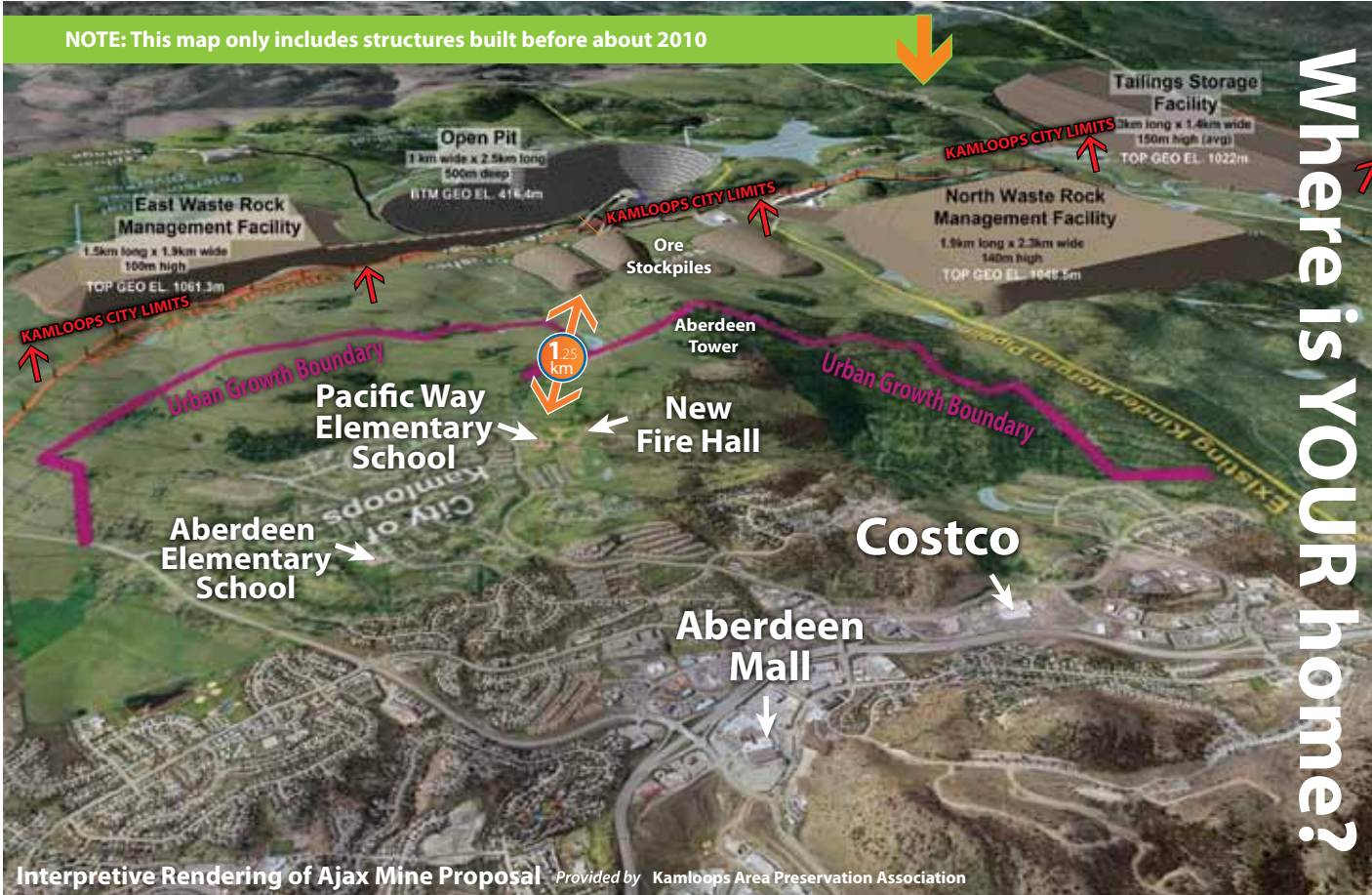


# Kamloops, this is YOUR front yard



Facts about Proposed AJAX Mine

NOTE: This map only includes structures built before about 2010



Due to the 4-fold increase in water input to the mine site and the massive amount of particulates generated by the mining activities, there will be...

**MORE FOG**  
**MORE HUMIDITY**  
**MORE HAZE**

**2% to 10% LESS SUNSHINE**

More airborne particulate matter will contribute to the presence of more fog and thicker fog. This can affect road safety, air temperatures & plant growth.

**11.7 Million \$**

Amount in millions of dollars generated by tournaments hosted in Kamloops 2010.

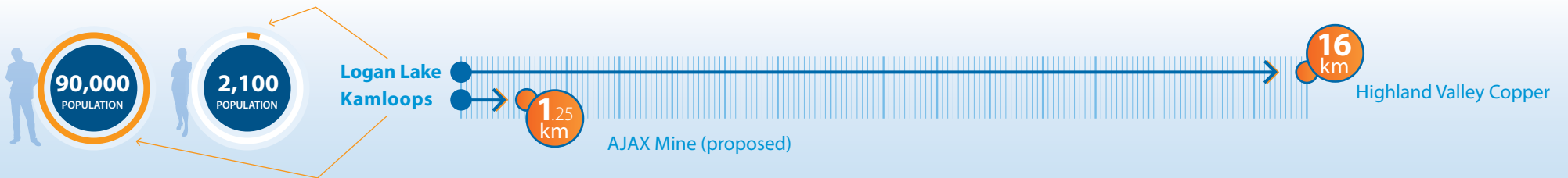
Kamloops is the **Tournament Capital of Canada**. Do we still need a mine to help our economy?

Kamloops Major Employers (2010)	
	# of employees
Interior Health Authority	3000
School District #73	2000
Thompson Rivers University	1725
City of Kamloops	630
BC Lottery Corporation	433
Safeway	400
Walmart	322
Northern Trailer	244
Costco	238

**Asthma in Your Family**  
Do you know someone with asthma or COPD? Asthma is an illness where every breath counts.  
*How will the mine affect respiratory health? What about air quality?*

**Doctor Shortage**  
Kamloops has a serious problem with a doctor shortage.  
*If more people get sick, how will that affect us? If the mine proceeds, how many doctors will leave Kamloops to live elsewhere?*

Interpretive Rendering of Ajax Mine Proposal Provided by Kamloops Area Preservation Association



**THE FACTS ARE THE FACTS**  
Go to [facebook.com/stopajaxmine](https://facebook.com/stopajaxmine) or [www.stopajaxmine.ca](http://www.stopajaxmine.ca)  
Sources of information in this sheet are available at: [stopajaxmine.ca/sources](http://stopajaxmine.ca/sources)

**Phone & Email your concerns**  
Kamloops City Council  
[citycouncil@kamloops.ca](mailto:citycouncil@kamloops.ca) 250-828-3494

**Terry Lake**  
North Thompson MLA  
250-554-5413  
[terry.lake.mla@leg.bc.ca](mailto:terry.lake.mla@leg.bc.ca)

**Kevin Krueger**  
South Thompson MLA  
250-314-6031  
[kevin.krueger.mla@leg.bc.ca](mailto:kevin.krueger.mla@leg.bc.ca)

**Harry Lali**  
NDP MLA  
250-387-3655  
[harry.lali.mla@leg.bc.ca](mailto:harry.lali.mla@leg.bc.ca)

Or write a letter to the editor of the newspaper  
[stopajaxmine.ca](http://stopajaxmine.ca)



Do you oppose AJAX? Go to [facebook.com/stopajaxmine](https://facebook.com/stopajaxmine) or [www.stopajaxmine.ca](http://www.stopajaxmine.ca) or call 250.377.8045 to Volunteer or Donate